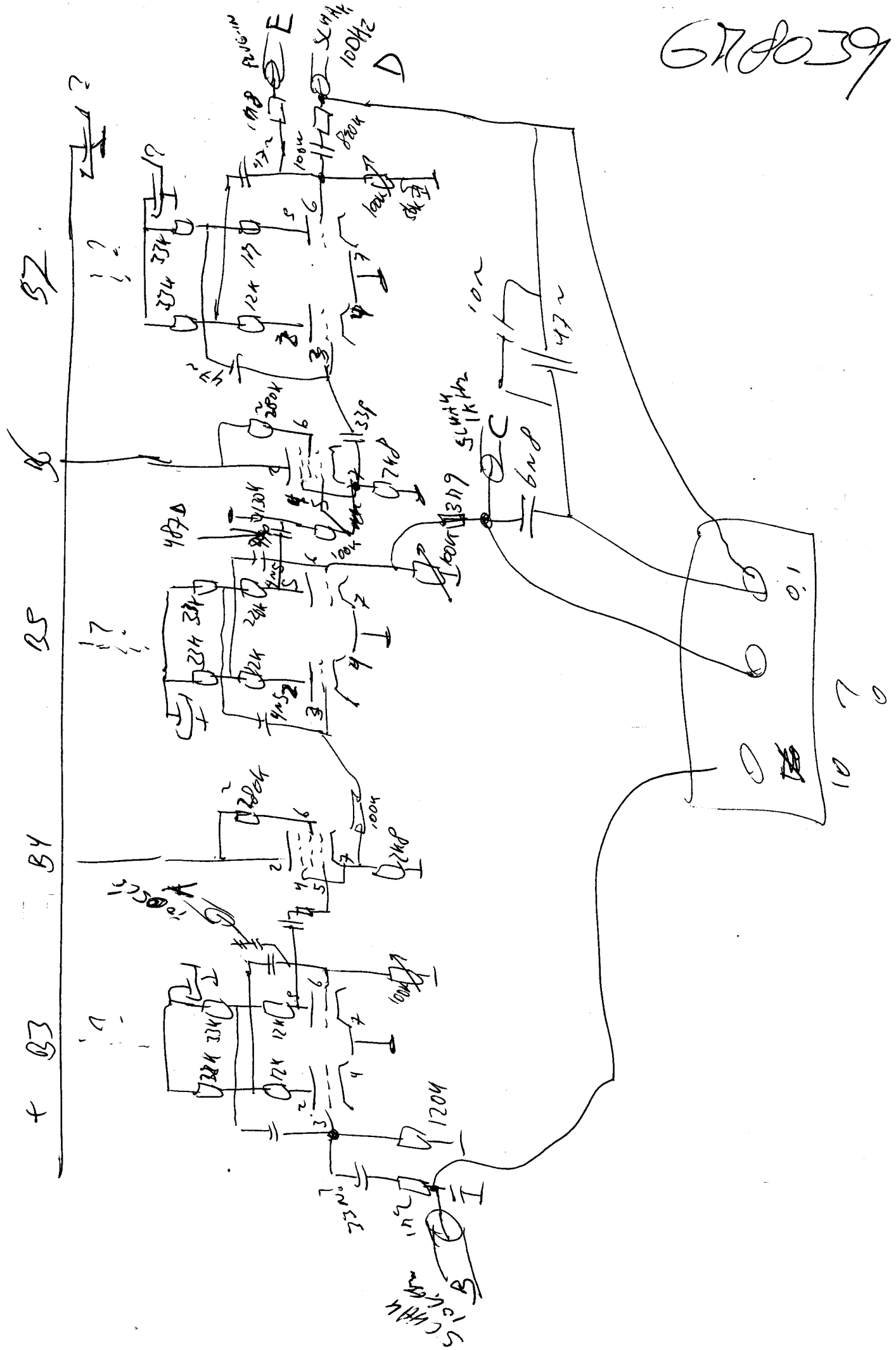
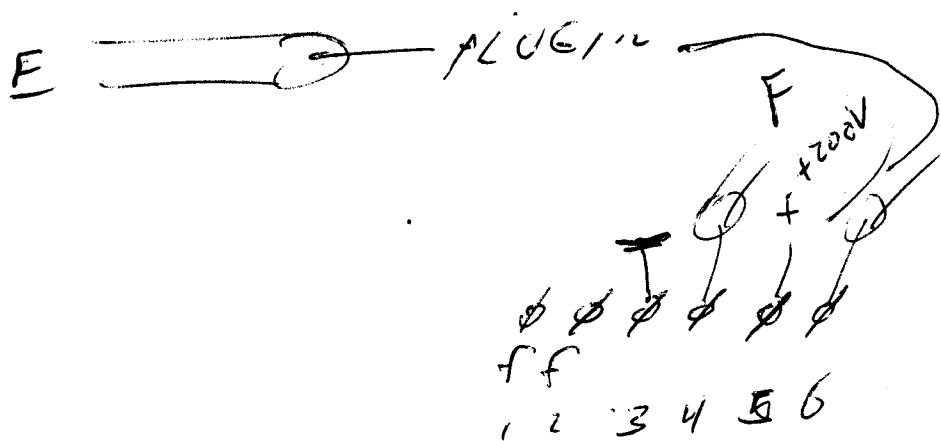
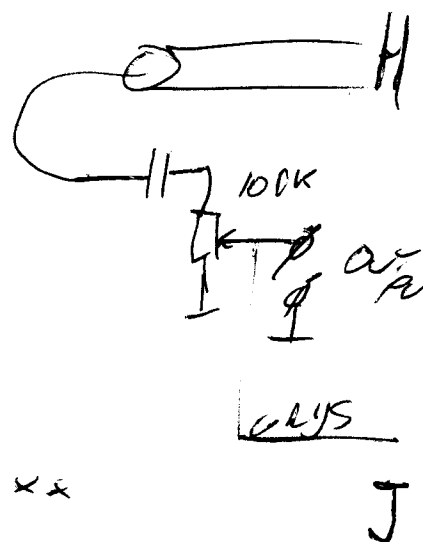
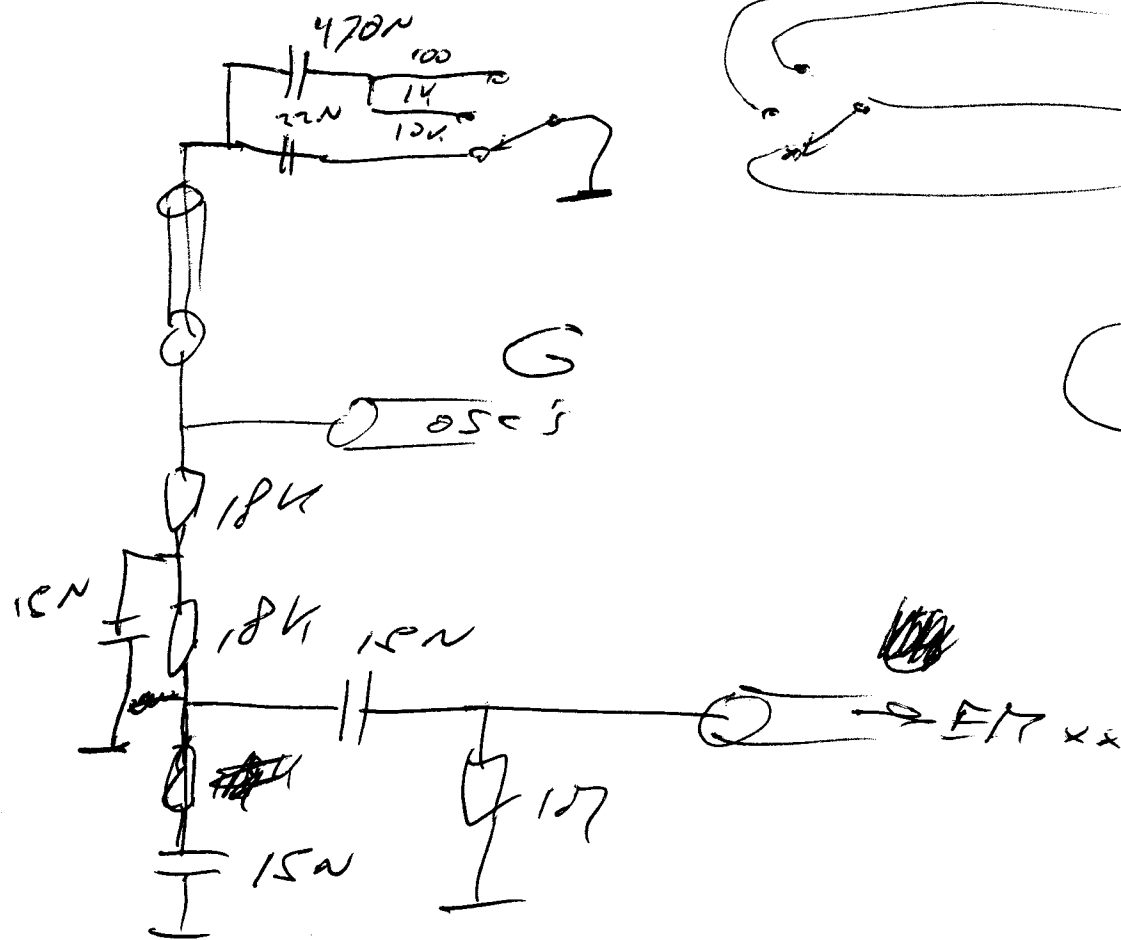
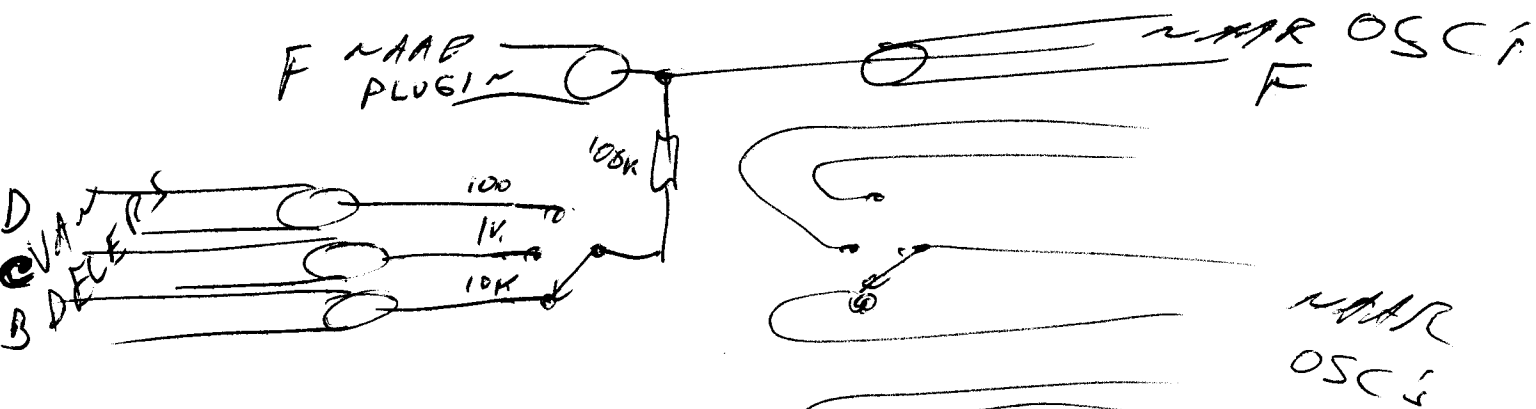


678039



670039

070P23

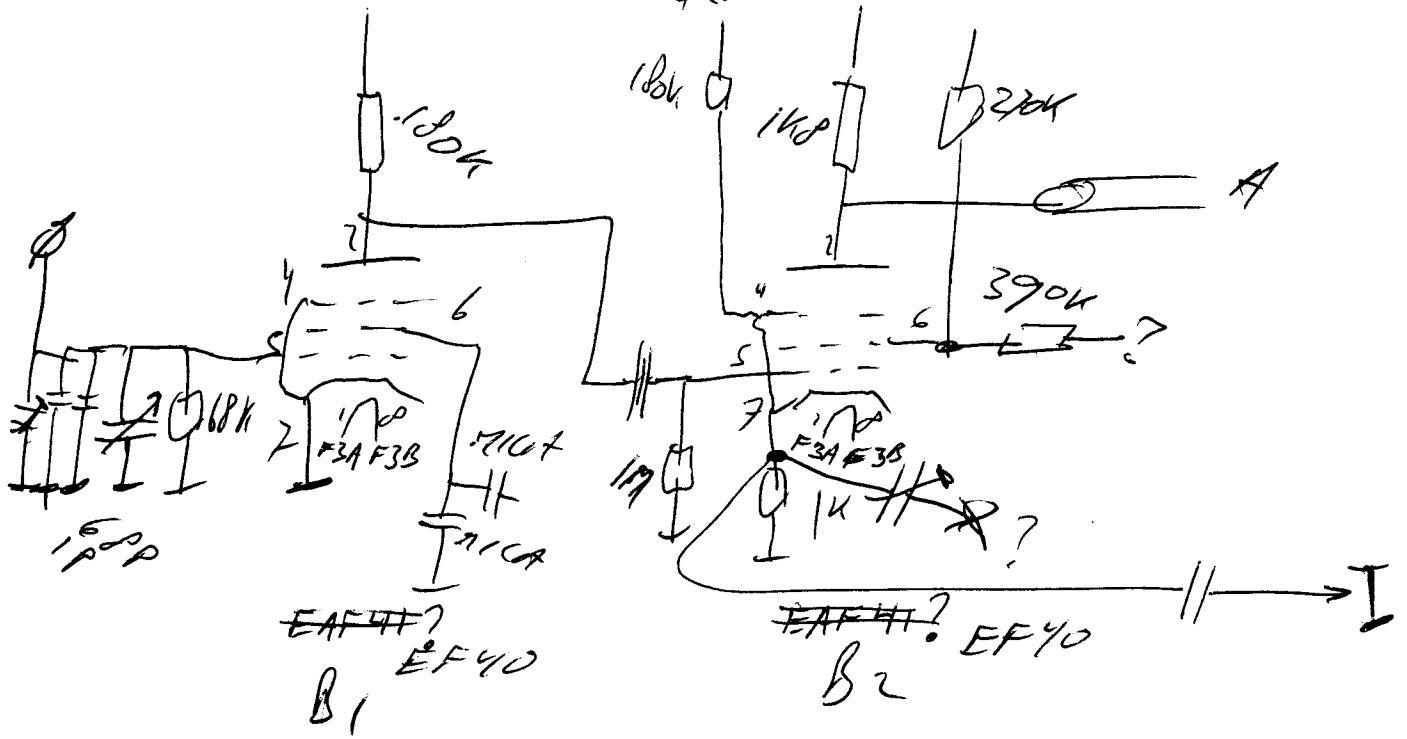


6178039

+200V

070830

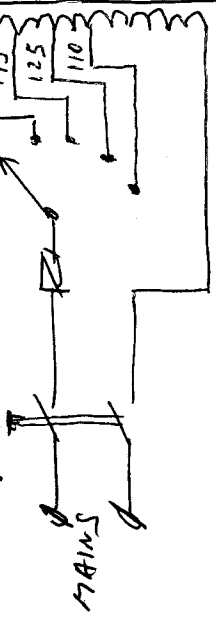
+200V +200V +200V



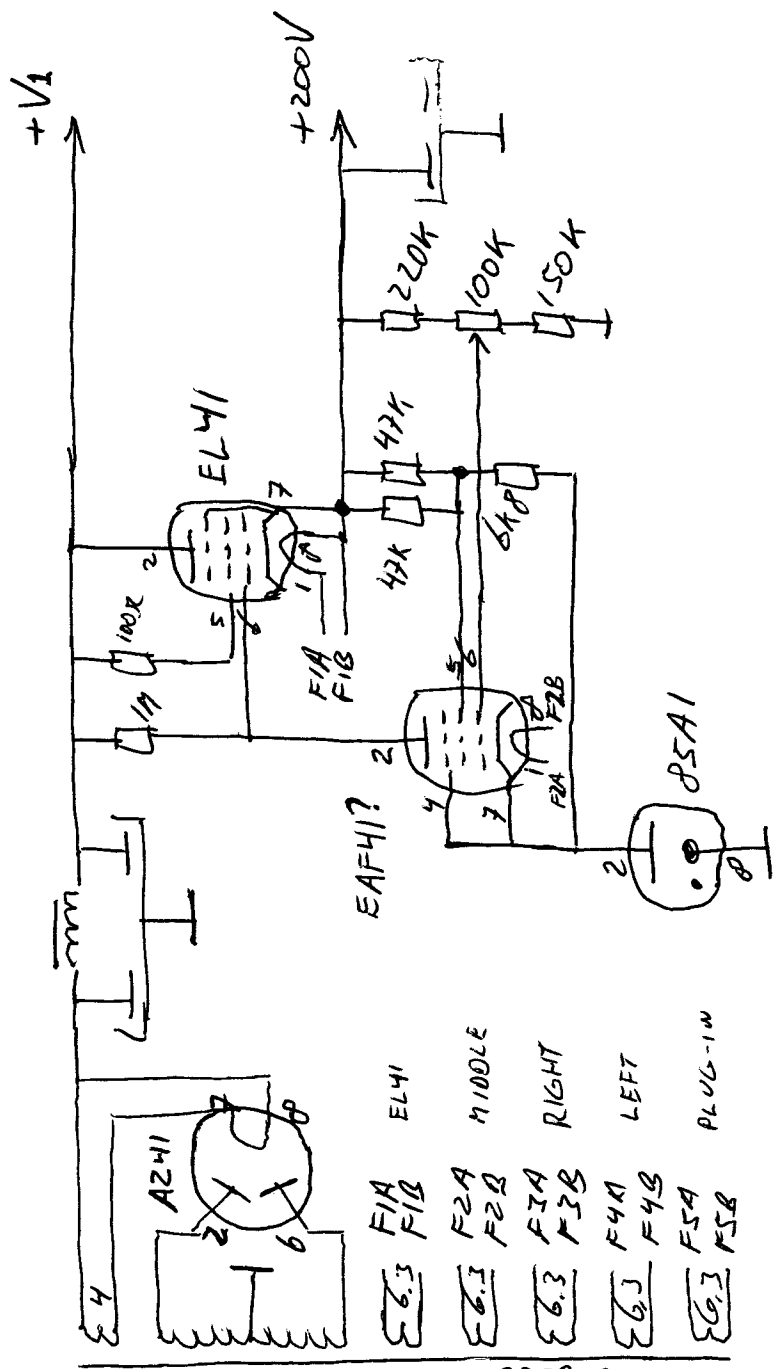
X-TAL OSCILLATOR

CIRCUIT IS INCOMPLETE AND WAS MODIFIED

G178039
 POWER SUPPLY
 (FP) 070907

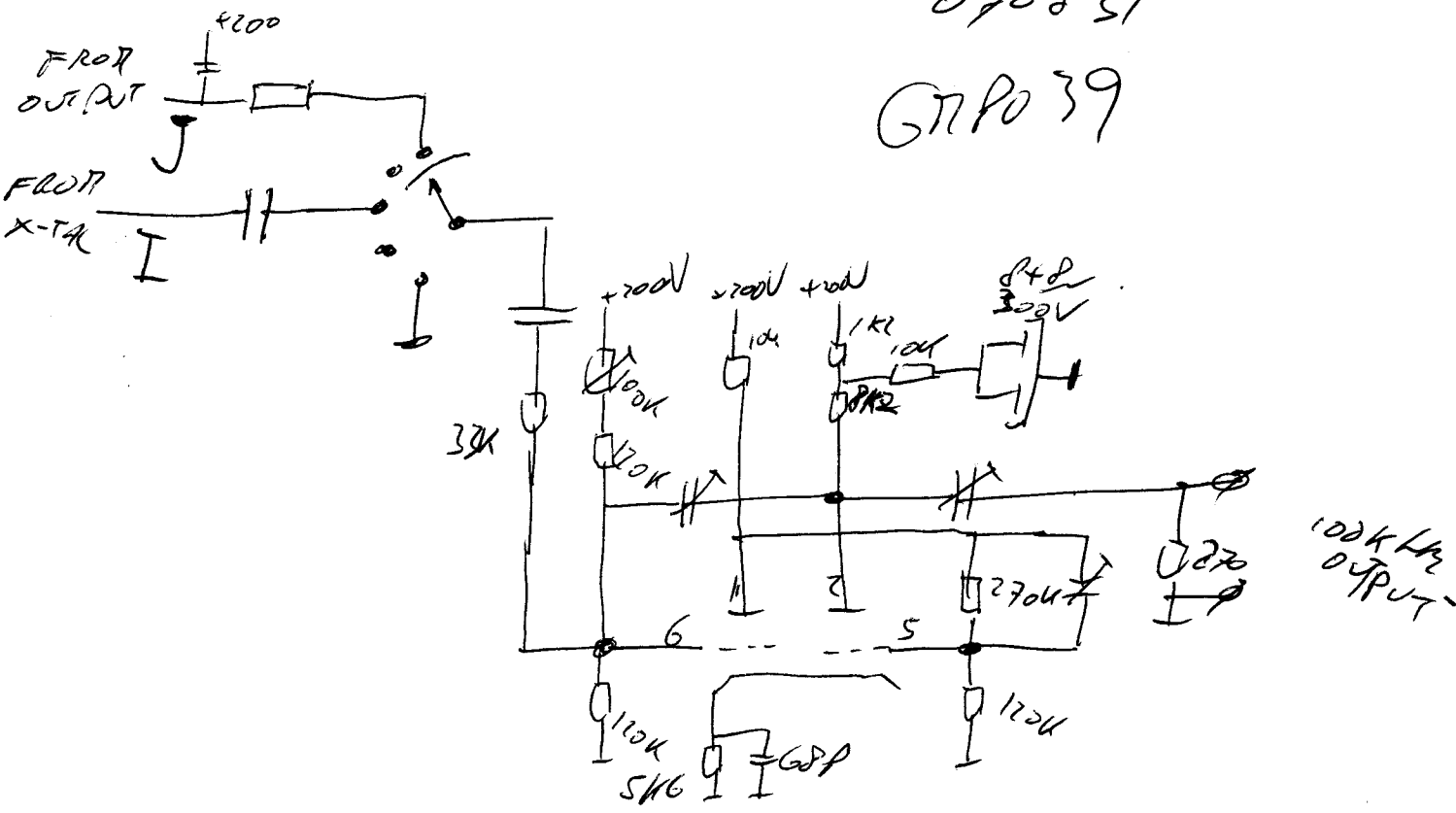


- | | | | |
|-----|-----|------|---------|
| 6.3 | F1A | EL41 | MIDDLE |
| 6.3 | F1B | | |
| 6.3 | F2A | | RIGHT |
| 6.3 | F2B | | |
| 6.3 | F3A | | LEFT |
| 6.3 | F3B | | |
| 6.3 | F4A | | |
| 6.3 | F4B | | |
| 6.3 | F5A | | PLUG-IN |
| 6.3 | F5B | | |



070831

GRPO 39

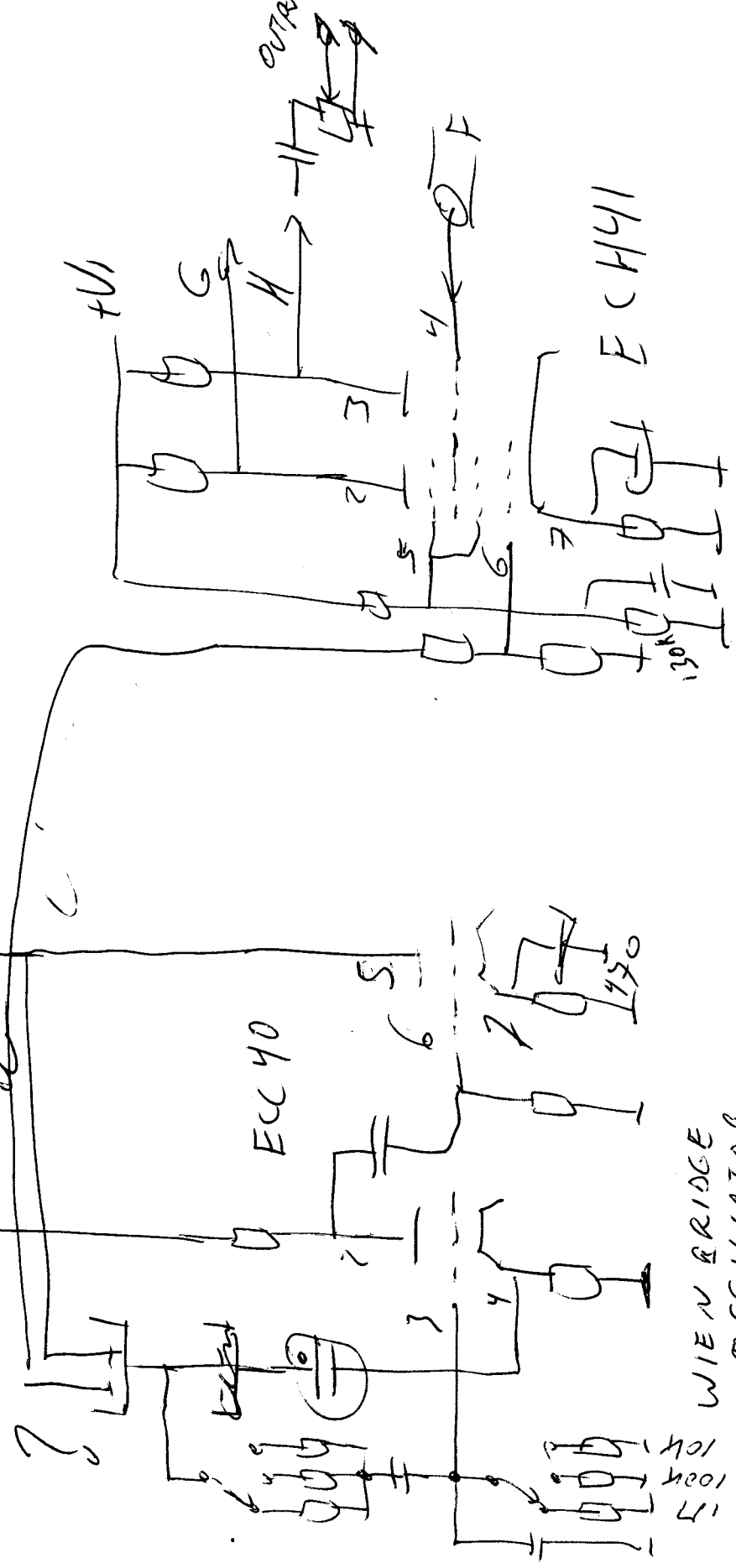


ECC91

THIS SCHMITT TRIGGER
WAS ADDED LATER

070827
 678039

1200V



AMPLIFIED
 PHASE COMPARATOR

WIEN BRIDGE
 OSCILLATOR