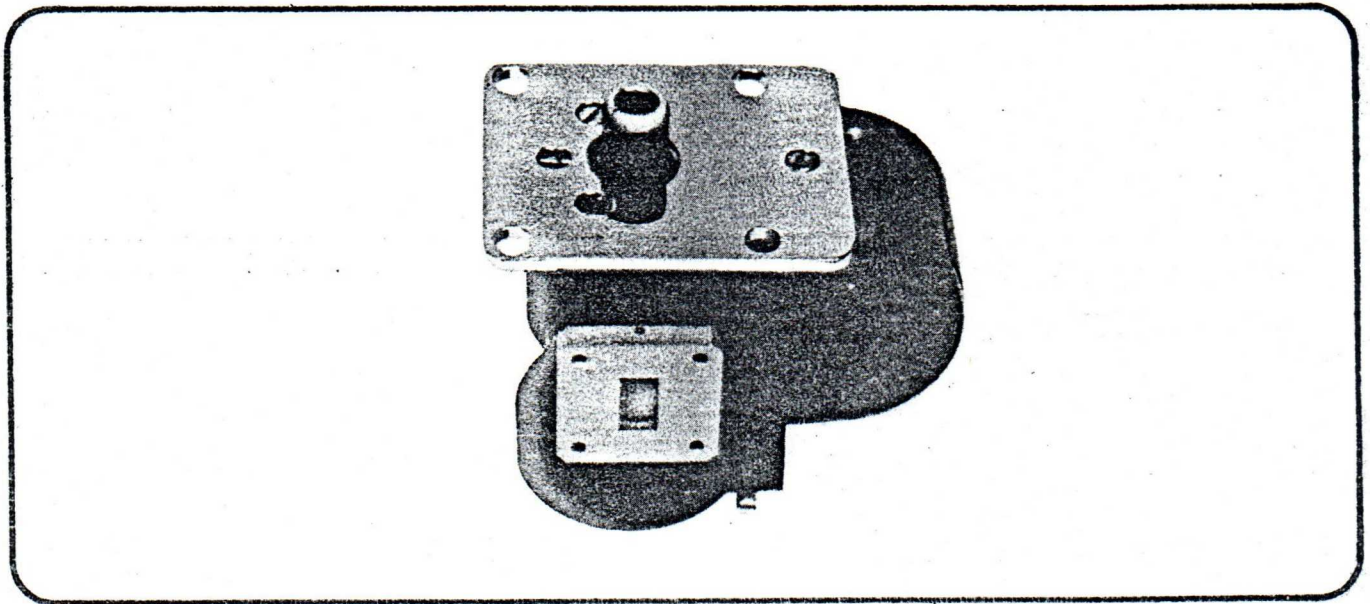


RM-112/MA-2862

Pulse Ku-Band Coaxial Magnetron

Bulletin 1570



DESCRIPTION

A sturdy, lightweight unit incorporating coaxial design. The RM-112 provides efficient tunable frequency operation for Ku-Band applications requiring a minimum peak power of 3000 watts and high frequency stability.

APPLICATIONS

Beacon and navigation systems, radar detection systems, missile ground support equipment, and airborne radar equipment, landing systems.

MICROWAVE ASSOCIATES, WATSONVILLE, INC. d/b/a

RELMAG DIVISION • MICROWAVE ASSOCIATES, INC.

For More Information Contact: RELMAG DIVISION • Watsonville, California • Phone 408-722-7181



Microwave Associates, Inc. Burlington, Massachusetts Tel. (617) 272-3000

Western Union Fax
TWX: 710-332-6789
Telex: 94-9464

SPECIFICATIONS

Electrical Characteristics

Peak Power	3000 W
Tunable Frequency	15400 - 15700 MHz
Pulling Factor (1.3:1 VSWR)	5 MHz Max.
Pushing Factor ($\pm 5\%$ ib)	± 0.5 MHz/A Max.
Missing Pulse Rate	0.1% Max.
Side Lobes	8 dB Min.
Thermal Coefficient	.024 MHz/ $^{\circ}$ C Max.

Mechanical Characteristics

Size	See Outline Drawing
Weight	3 lbs./1,36 kg Nom.
Mounting Position	Any
Output Connector	Waveguide

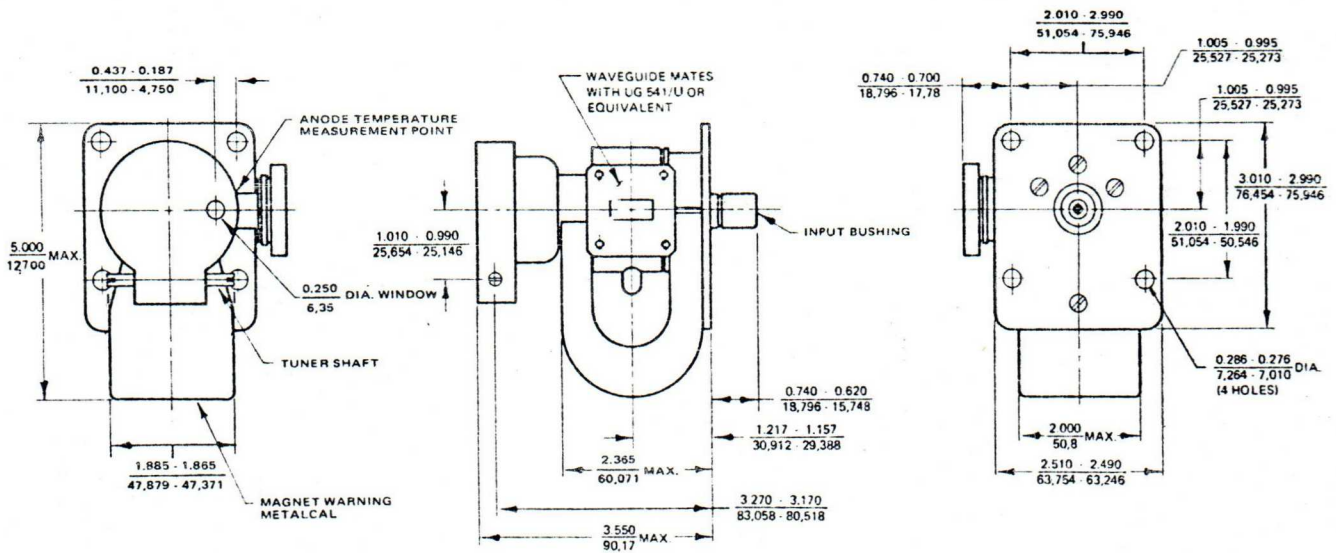
Operating Conditions

Heater Voltage	6.3 V
Heater Current	2.3 A Max.
Preheat Time	60 Sec. Min.
Pulse Voltage	3400-3700 V
Pulse Current	3A
Anode-Cathode Capacitance	20 pF Min.
Duty Cycle	.005 Ratio Max.

Environmental Characteristics

Cooling	Conduction and/or Air Cooled
Ambient Temperature	-54° C to 71° C
Altitude	25000 Ft./7620 m
Vibration (40 to 2,000 cps)	10 G
Shock (3 ms)	200 G

OUTLINE DRAWING



NOTE:

INCH
MM