



1625

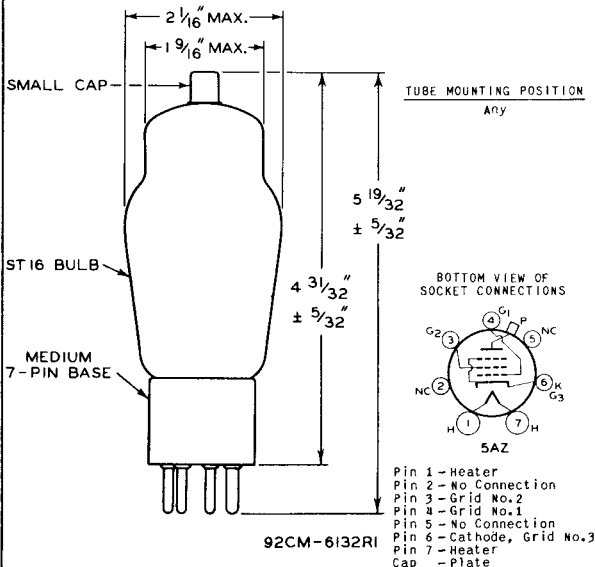
1625

TRANSMITTING BEAM POWER AMPLIFIER

Heater	Coated Unipotential Cathode	
Voltage	12.6 ($\pm 10\%$)	a-c or d-c volts
Current	0.45	amp.
Transconductance for plate cur. of 72 ma.	6000 approx.	μmhos
Grid-Screen Mu-Factor	8	
Direct Interelectrode Capacitances:		
Grid to Plate (with external shielding)	0.2 max.	μf
Input	11	μf
Output	7	μf
Overall Length	5-19/32" \pm 5/32"	←
Seated Height	4-31/32" \pm 5/32"	←
Maximum Diameter	2-1/16"	
Bulb	ST-16	
Cap	Small	
Base	Medium 7-Pin, Micanol	

*Maximum Ratings Are Absolute Values***MAXIMUM CCS and ICAS RATINGS with TYPICAL OPERATING CONDITIONS**

These are the same as those for Type 807 except that maximum d-c heater-cathode potential is 135 volts. Curves under the 807 also apply to the 1625.



← Indicates a change.

DEC. 15, 1944

RCA VICTOR DIVISION
 RADIO CORPORATION OF AMERICA, HARRISON, NEW JERSEY

DATA