



929

929

HIGH-VACUUM PHOTOTUBE

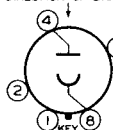
BLUE SENSITIVE

DATA

General:

Spectral Response	S-4
Wavelength of Maximum Response	4200 Angstroms
Cathode:	
Shape	Semi-Cylindrical
Minimum Projected Length*	13/16"
Minimum Projected Width*	5/8"
Center Length (from bottom edge of base)	1-31/32" ± 3/32"
Direct Interelectrode Capacitance	2.6 μmf
Mounting Position	Any
Maximum Overall Length	3-1/16"
Maximum Seated Length	2-1/2"
Maximum Diameter	1-5/16"
Bulb	T-9
Base	Intermediate Shell Octal 5-Pin

BOTTOM VIEW
DIRECTION OF LIGHT



Pin 1 - No Connection
Pin 2 - No Connection
Pin 4 - Anode

Pin 6 - No Connection
Pin 8 - Cathode

Maximum Ratings, Absolute Values:

ANODE-SUPPLY VOLTAGE (DC or Peak AC)	250 max.	volts
CATHODE CURRENT DENSITY	100 max.	μamp./sq.in.
AVERAGE CATHODE CURRENT ^o	20 max.	μamp.
AMBIENT TEMPERATURE	75 max.	°C

Characteristics:

Max. Dark Current at 250 volts	0.0125	μamp.
Sensitivity:		
At 4200 Angstroms	0.037	μamp./μwatt
Luminous	45	μamp./lumen

Minimum Circuit Value:

DC Load Resistance for 250-volt anode-supply voltage	1	megohm
---	---	--------

* On plane perpendicular to indicated direction of incident light.
^o On the basis of the use of a sensitive cathode area 1/2" in diameter.

Spectral Sensitivity Characteristic of Phototube having S-4 Response is shown at beginning of this section.

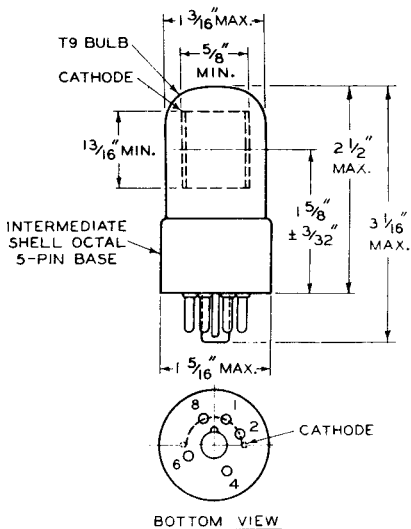
← indicates a change.

929



929

HIGH-VACUUM PHOTOTUBE



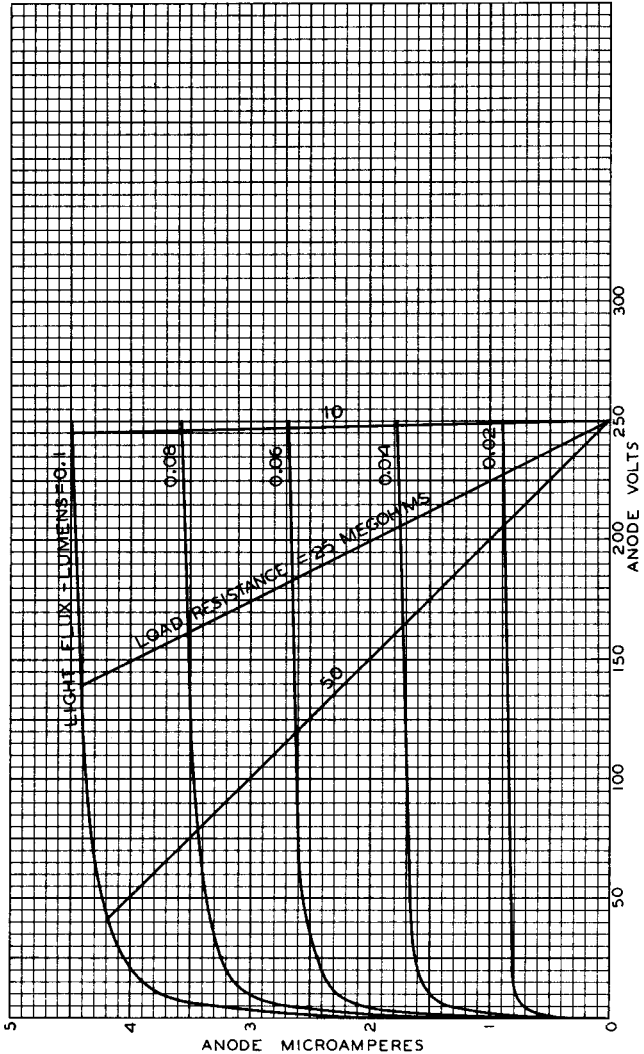
92CM-6137R2



929

929

AVERAGE ANODE CHARACTERISTICS



APRIL 11, 1940

RCA VICTOR DIVISION
RADIO CORPORATION OF AMERICA, HARRISON, NEW JERSEY

92C-6151

Vacuum Phototube

SIDE-ON TYPE HAVING S-4 RESPONSE

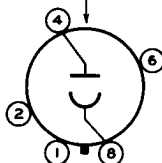
DATA

General:

Spectral Response.	S-4
Wavelength of Maximum Response	4000 ± 500 angstroms
Cathode:	
Shape.	Semicylindrical
Minimum projected length ^a	13/16"
Minimum projected width ^a	5/8"
Direct Interelectrode Capacitance (Approx.).	2.6 μf
Maximum Overall Length	3-1/16"
Maximum Seated Length.	2-1/2"
Seated Length to Center of Cathode	1-5/8" ± 3/32"
Maximum Diameter	1-9/32"
Operating Position	Any
Weight (Approx.)	0.9 oz ←
Bulb	T9
Socket	Cinch No.8 JM-1, or equivalent ←
Base	Intermediate-Shell Octal 5-Pin, Arrangement 1 (JEDEC Group 1, No. B5-10) ←
Basing Designation for BOTTOM VIEW	3J

DIRECTION OF LIGHT

Pin 1 - No Internal
Connection
Pin 2 - No Internal
Connection



Pin 4 - Anode
Pin 6 - No Internal
Connection
Pin 8 - Cathode

Maximum Ratings, Absolute-Maximum Values: ←

ANODE-SUPPLY VOLTAGE (DC or Peak AC).	250 max.	volts
AVERAGE CATHODE-CURRENT DENSITY ^b	25 max.	μa/sq. in.
AVERAGE CATHODE CURRENT ^b	5 max.	μa
AMBIENT TEMPERATURE.	75 max.	°C

Characteristics: ←

With an anode-supply voltage of 250 volts

	Min.	Median	Max.	
Sensitivity:				
Radiant, at 4000 angstroms.	-	0.044	-	amp/watt
Luminous ^c	25	45	70	μa/lumen
Anode Dark Current at 25° C.	-	-	0.0125	μa

←Indicates a change.



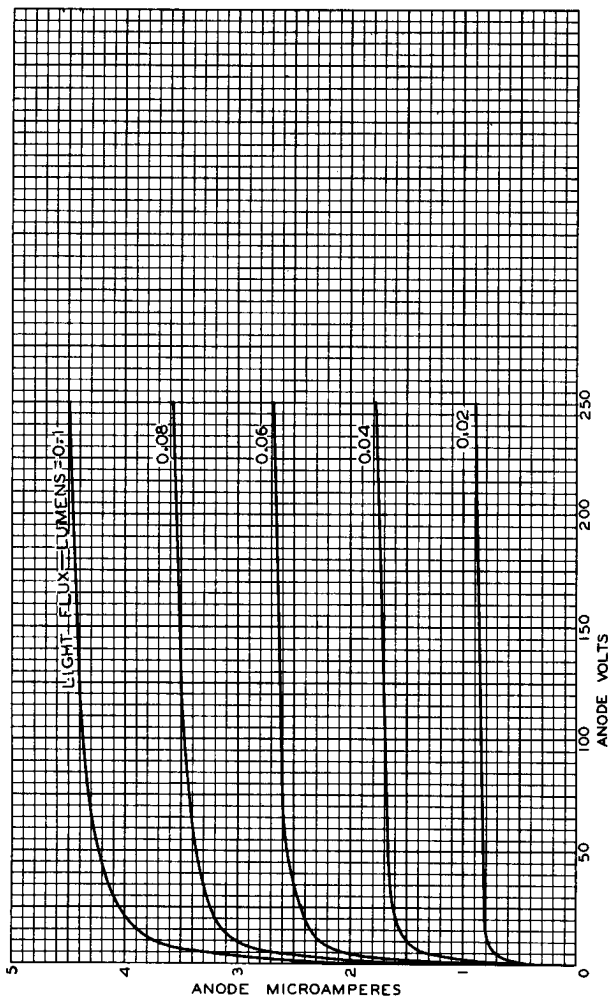
- a On plane perpendicular to indicated direction of radiation.
- b Averaged over any interval of 30 seconds maximum.
- c For conditions where the light source is a tungsten-filament lamp operated at a color temperature of 2870° K. A 1-megohm load resistor and a light input of 0.1 lumen are used.

**SPECTRAL-SENSITIVITY CHARACTERISTIC
OF PHOTOSENSITIVE DEVICE HAVING S-4 RESPONSE
is shown at the front of this section**

**DIMENSIONAL OUTLINE
shown under Type 5581 also applies to the 929**



AVERAGE ANODE CHARACTERISTICS



92CM-6151R1

