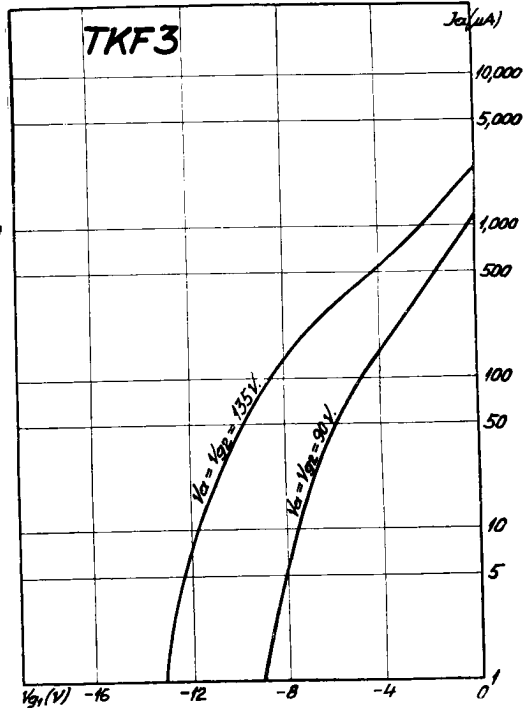
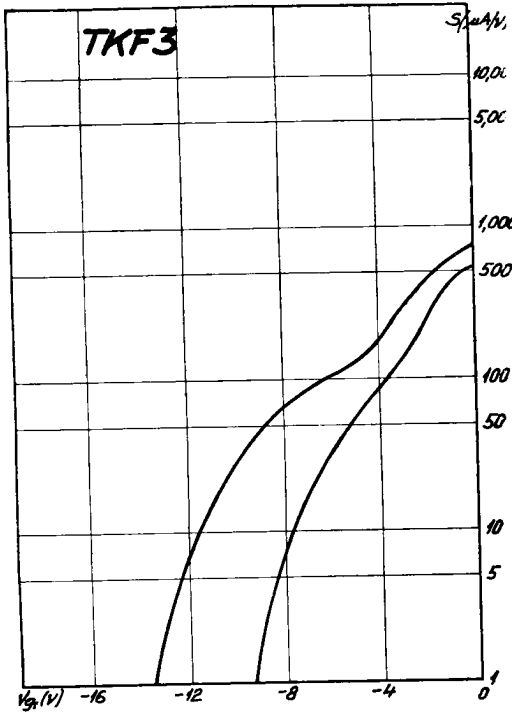
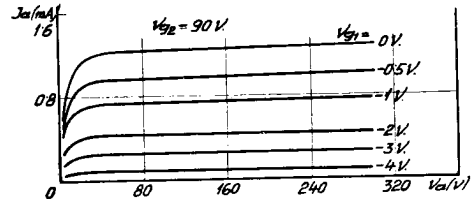
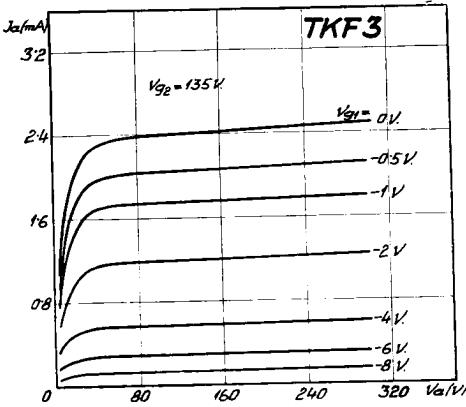
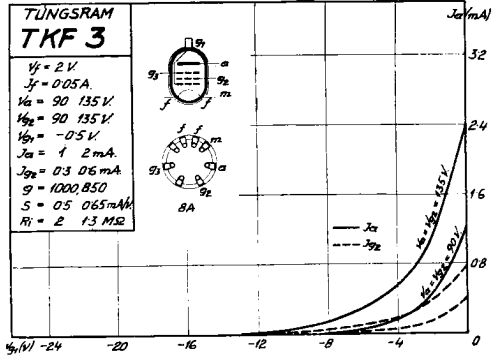


Karakteristiken der TKF3

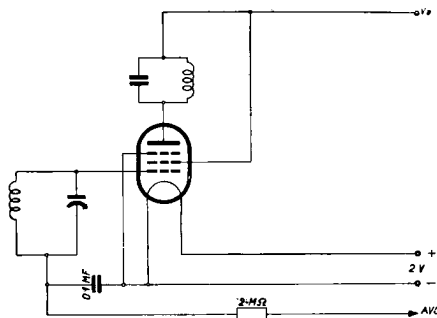


Batterie Hochfrequenz — Tegelpenthode TKF3

Dom-Kolben: Max. Kolbendurchmesser: 40 mm. Gesamtlänge: 102 mm.

Elektrode	Lamelle	Grenzdaten				Einstellung				Kapazität	
		Spannung	Strom	Widerstand	Leistung	für 90 V		für 135 V		gegen Gitter 1.	gegen alle anderen Elektroden
						V	mA	MΩ	W		
F	2-3	---	---	---	---	2	50	---	---	---	---
K	—	---	5	---	---	---	1·3	---	---	---	---
M	4	---	---	---	---	---	---	---	---	---	---
G1	Kappe	—0·2	---	2·5	---	—0·5	---	—0·5	---	---	5·7
G2	6	135	---	---	0·2	90	0·3	135	0·6	---	---
G3	8	---	---	---	---	0	0	0	0	---	---
A	5	135	---	---	0·7	90	1·—	135	2·—	0·006	5·1

Betriebsdaten					Für 90 V		Für 135 V		Einheit	
Vorspannung	---	---	---	---	Vg1	—0·5	—10	—0·5	—15	V
Anodenstrom	---	---	---	---	Ja	1	0·015	2	0·015	mA
Steilheit	---	---	---	---	S	0·5	0·002	0·65	0·002	mA/V
Verstärkungsfaktor	---	---	---	---	G	1000		850		—
Innerer Widerstand	---	---	---	---	Ri	2	>10	1·3	>10	MΩ



TKF3 als Z. F.-Verstärker