

Mullard

Television Secondary Emission Valve

TSE4

Heater	Vf	=	4.0 V
	If	=	1.1 A

Capacities	Ca	=	9.3 uuF
	Cgl	=	10.0 uuF
	Cagl	=	0.004 uuF

Operating Conditions

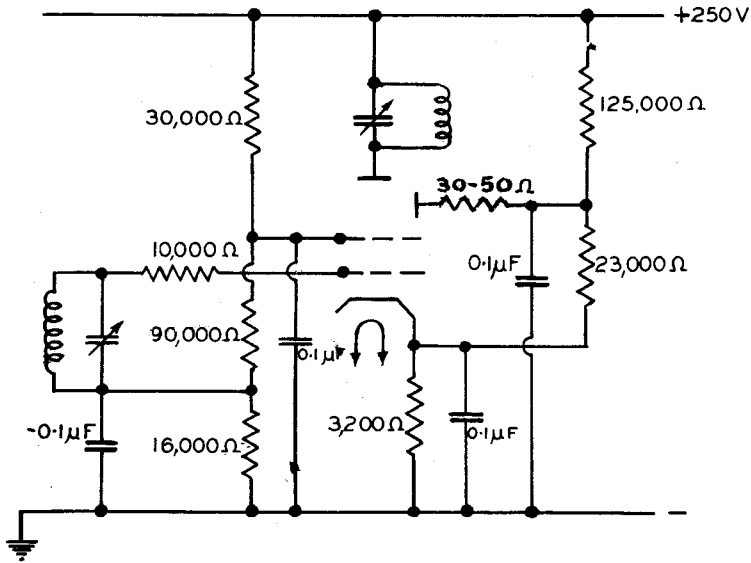
Va	250	V
Vg2	150	V
Vk2	150	V
Vg1	-2.5	V
Ia	8	mA
Ig2	0.7	mA
Ik2	6	mA
S (Ia = 8 mA)	14.5	mA/V
Ri (Ia = 8 mA)	100,000	ohms

Limiting Values.

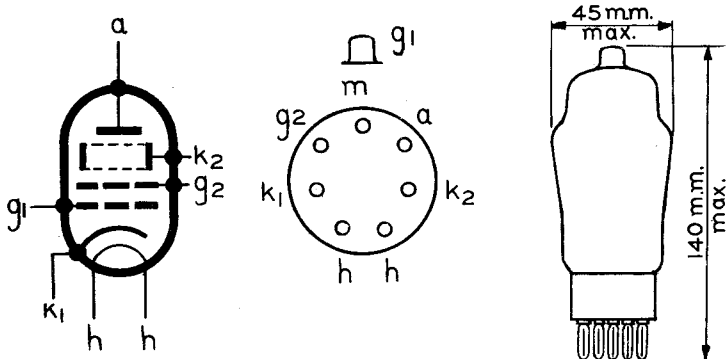
Vao max	550	V
Va max	250	V
Wa max	2	W
Vg2o max	550	V
Vg2 max	150	V
Wg2 max	0.11	W
Vk2o max	550	V
Vk2 max	150	V
Wk2 max	1.1	W
Ik max	4	mA
Vg1 max (Igl = +0.3 uA)	-1.3	V
Rgla max	2	megohms
Vfk max	50	V
Rfk max	20,000	ohms

TSE4

CIRCUIT DIAGRAM



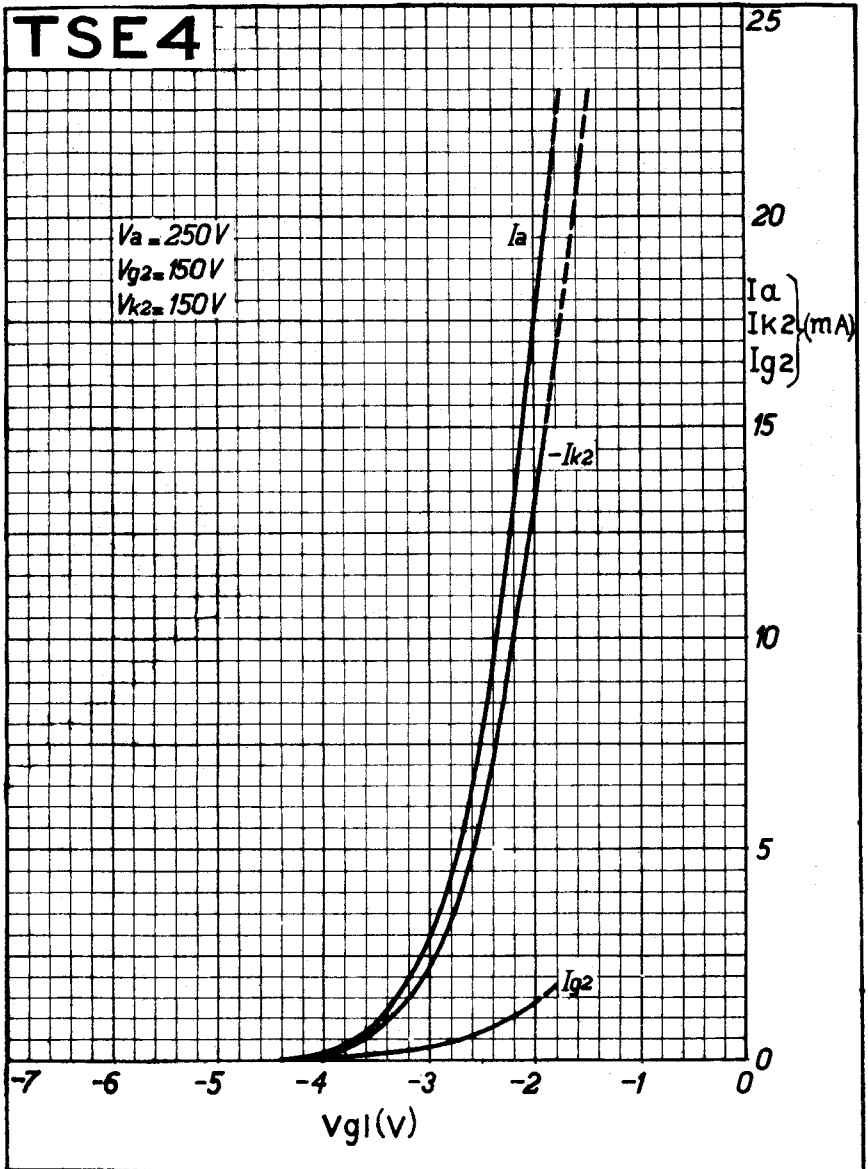
Arrangement of electrodes and base connections.



Mullard

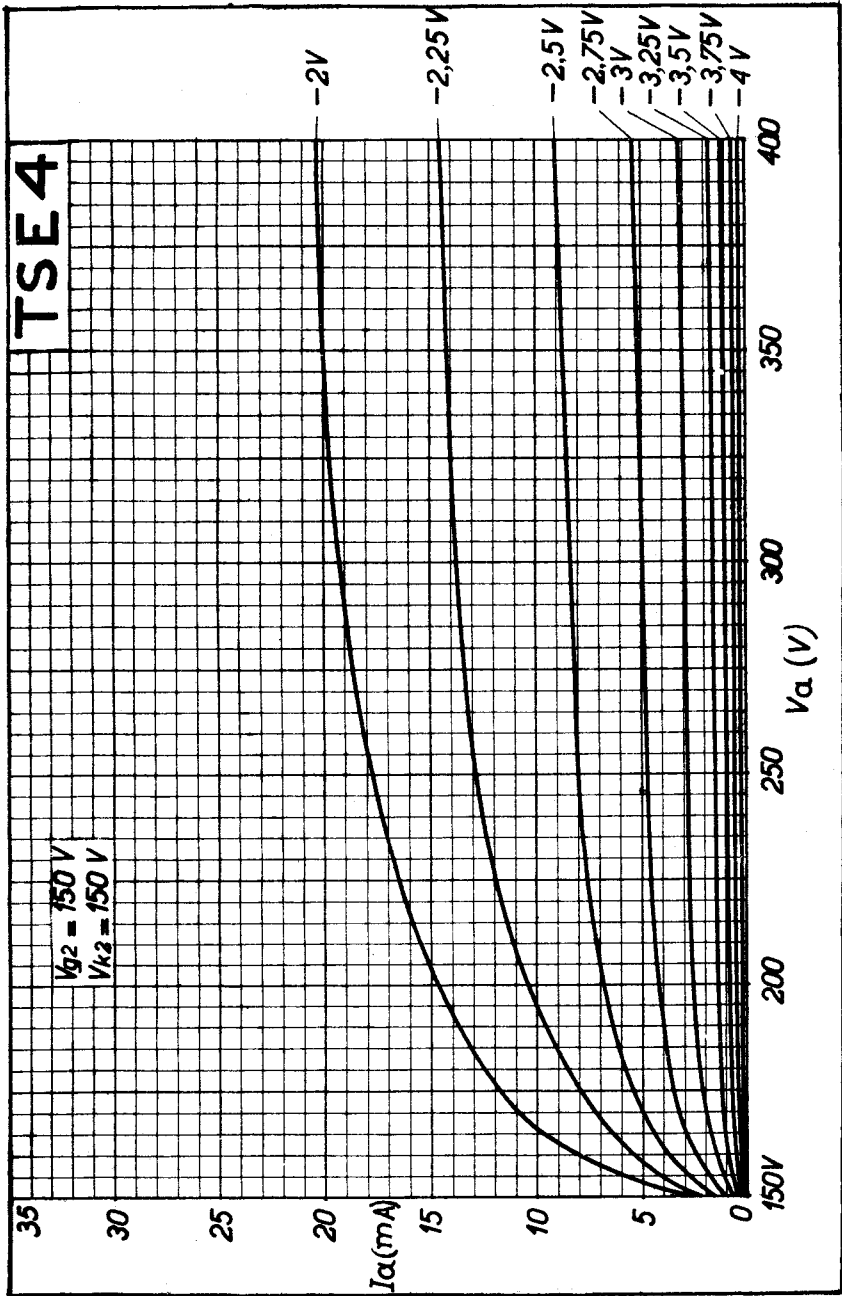
Television Secondary Emission Valve

TSE4



TSE4

Mullard Television Secondary Emission Valve



Mullard

Television Secondary Emission Valve

TSE4

