



# 12YP4 Cathode-Ray Picture Tube

*Kel. 1002*

The T. E. I. 12 YP4 is a 12½" direct-view picture tube for use in television receivers and includes such features as:

- A 3° offset electron gun designed to be used with an external ion-trap magnet.
- An insulating band on the lower edge of the internal conductive coating assuring a sharper picture through the elimination of stray or spurious beams.
- Outside conductive coating
- Automatic electrostatic focusing.

### DATA

#### General

Heater voltage .....	6.3	volts
Heater current .....	0.6 ± 10%	ampere
Direct interelectrode capacitances (approx):		
Grid No. 1 to all other electrodes .....	6	μμf
Cathode to all other electrodes .....	5	μμf
Phosphor .....	No. 4	
Fluorescence .....	white	
Persistence .....	medium	
Focusing method .....	electrostatic	
Deflecting method .....	magnetic	
Deflection angle, (approx.) .....	54°	

#### Mechanical

Overall length .....	18¾" ± ⅜"
Greatest diameter of bulb .....	12⅞" + ⅛" - ⅞"
Minimum useful screen diameter .....	11¼"
Cap .....	Recessed small cavity
Base .....	Small shell duodecal 5-Pin
Basing .....	JETEC Designation 12D
Mounting position .....	Any
Net weight (approx.) .....	14½ lbs.

\*Corresponding socket should not be rigidly mounted but should be wired with flexible leads and allowed to move freely.

### Terminal Connections

MAX. ANGLE BETWEEN LINE JOINING TUBE AXIS TO CENTER OF ANODE CONTACT AND LINE JOINING TUBE AXIS TO CENTER OF PIN POSITION NO. 3 ± 10°



- 1 HEATER
- 2 GRID NO. 1
- 10 GRID NO. 2
- 11 CATHODE
- 12 HEATER CAP ANODE

#### Maximum Ratings (Design-Center Values)

Maximum anode voltage .....	12000 d-c	volts
Maximum grid-No. 2 voltage .....	410 d-c	volts
Grid-No. 1 Voltage:		
Maximum negative bias value .....	125 d-c	volts
Maximum positive bias value .....	0 d-c	volts
Maximum positive peak value .....	2 d-c	volts

NOTE: Additional data will be furnished by our engineering department upon request.

Peak heater-cathode voltage: (Note 1)

Maximum heater negative with respect to cathode .....	125	volts
Maximum heater positive with respect to cathode .....	125	volts
Grid-No. 1-circuit resistance .....	1.5	megohms

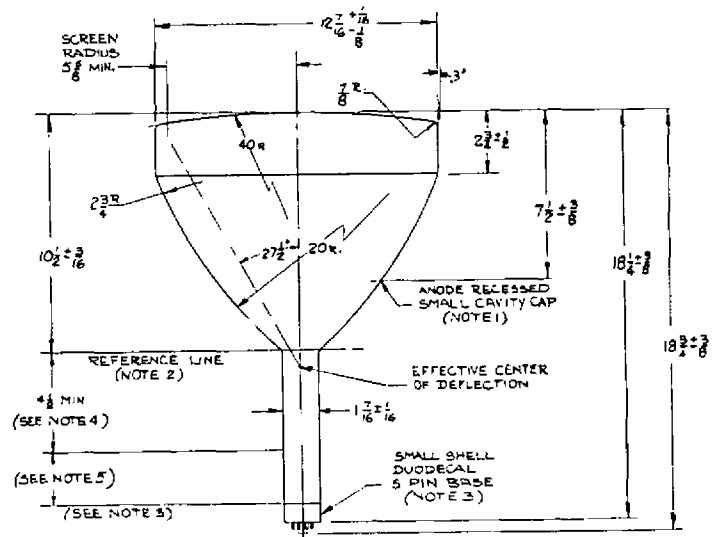
#### Typical Operating Conditions

Anode voltage .....	11000 d-c	volts
Grid-No. 2 voltage .....	250 d-c	volts
Grid-No. 1 voltage (Note 2) .....	-33 to -73 d-c	volts
External Conductive Coating .....	3000	μμf
Ion-trap current (Note 3) (approx.) .....	120 d-c	ma

NOTE 1: A value of 410 max. volts is allowed during equipment warm-up period not to exceed 15 seconds.

NOTE 2: Visual extinction of undeflected focused spot.

NOTE 3: With JETEC standard ion-trap magnet of 40 gauss minimum.



NOTE 1: The plane through the tube axis and vacant pin position No. 3 may vary from the plane through the tube axis and anode terminal by an angular tolerance (measured about the tube axis) of 10°. Anode terminal is on same side as vacant pin position No. 3.

NOTE 2: Reference line is determined by position where hinged gauge 1.500" ± .003" - .000" I.D. and 2" long will rest on bulb cone.

NOTE 3: Align ion-trap magnet with poles of coil A (large coil) adjacent l-shaped pole pieces on mount, north pole on same side as base pin No. 6, and the other poles toward the tube face.

NOTE 4: Location of deflecting yoke must be within this space.

NOTE 5: Keep this space clear for ion-trap magnet.

## THOMAS ELECTRONICS, Inc.

118 Ninth Street

Passaic, New Jersey