

JETEC TYPE DESIGNATION REGISTRATION FORM

SHUTTER TUBE

Manufacturer's Designation: BL-315                      December 12, 1956  
JETEC Designation: 6588  
Manufacturer: Bomac Laboratories, Inc.  
                    Beverly, Massachusetts

The 6588 is a broad-band device for opening or shorting waveguide lines at low power levels. When closed, it provides protection of a receiver crystal from high level signals. It is a fixed tuned device with an operational band from 23, 700 to 24, 300 megacycles per second.

ELECTRICAL DATA - GENERAL

Operational Band (Shutter Open)	
VSWR 1. 2 maximum	23, 700 to 24, 300 Mc.
Insertion Loss at 24, 000 Mc. (Shutter open)	0. 6 db (max. )
Insertion Loss 23. 7 to 24. 3 Kmc. (Shutter closed)	30 db (min. )

ELECTRICAL DATA - SHUTTER CIRCUIT

Pull-In Voltage	9. 5 Vdc (max. )
Holding Voltage	7. 0 Vdc (max. )
Rated Coil Voltage	14. 0 Vdc (nom. )
Rated Coil Resistance	100 ohms (nom. )
Insulation Breakdown (Coil to Waveguide)	500 Vdc (min. )

MECHANICAL DATA - GENERAL

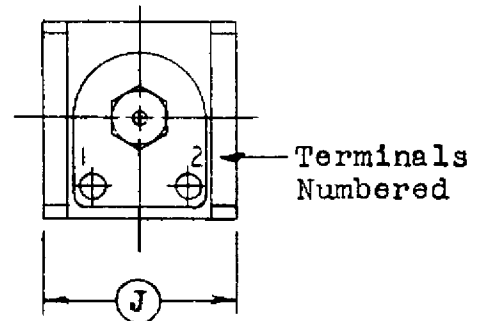
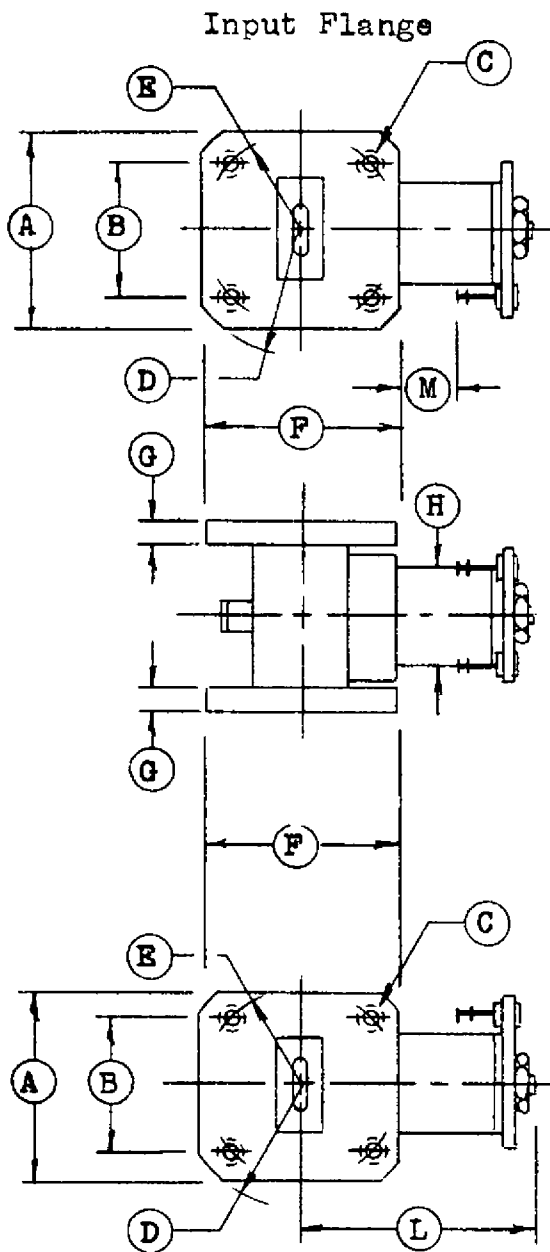
Mounting Position	Any
Weight, approximately	3 ounces.

ABSOLUTE MAXIMUM RATINGS

The shutter is not intended for applications involving the switching of peak power greater than one kilowatt.

OUTLINE DRAWING

As per attached drawing dated 2-11-55.



Contact surfaces of input and output flanges to be silver plated and rhodium flashed. All other metallic surfaces to be painted black.

Exhaust stem not to extend beyond flanges, if used.

Ref.	Dimension
A**	1.000 ±.005
B*	0.680 ±.005
C	4-40 Tap
	8 Holes
D**	0.625 ±.005 Rad.
E*	0.500 ±.005 B.C.
F**	1.000 ±.005
G**	0.125 ±.015
H*	0.510 Max. Dia.
J	0.990 ±.003
L*	1 1/4 Max.
M*	5/16 Min.

Output Flange

## SPECIFICATION SHEET

Outline

6588/BL-315

BOMAC LABORATORIES INC.  
SALEM ROAD  
BEVERLY, MASSACHUSETTS

2-11-55 clr