

JETEC TYPE DESIGNATION REGISTRATION FORM TR TUBESManufacturers Designation: MST-38

Date: 8-14-62

JETEC Designation: 8099Manufacturer: Metcom, Inc., Salem, Mass.General Characteristics:

The 8099 is a broad band TR tube designed to effectively decouple the receiver from a common transmitting and receiving antenna during a period of transmission. Its operational band is from 2625 to 2925 megacycles.

Electrical Data - Typical Values

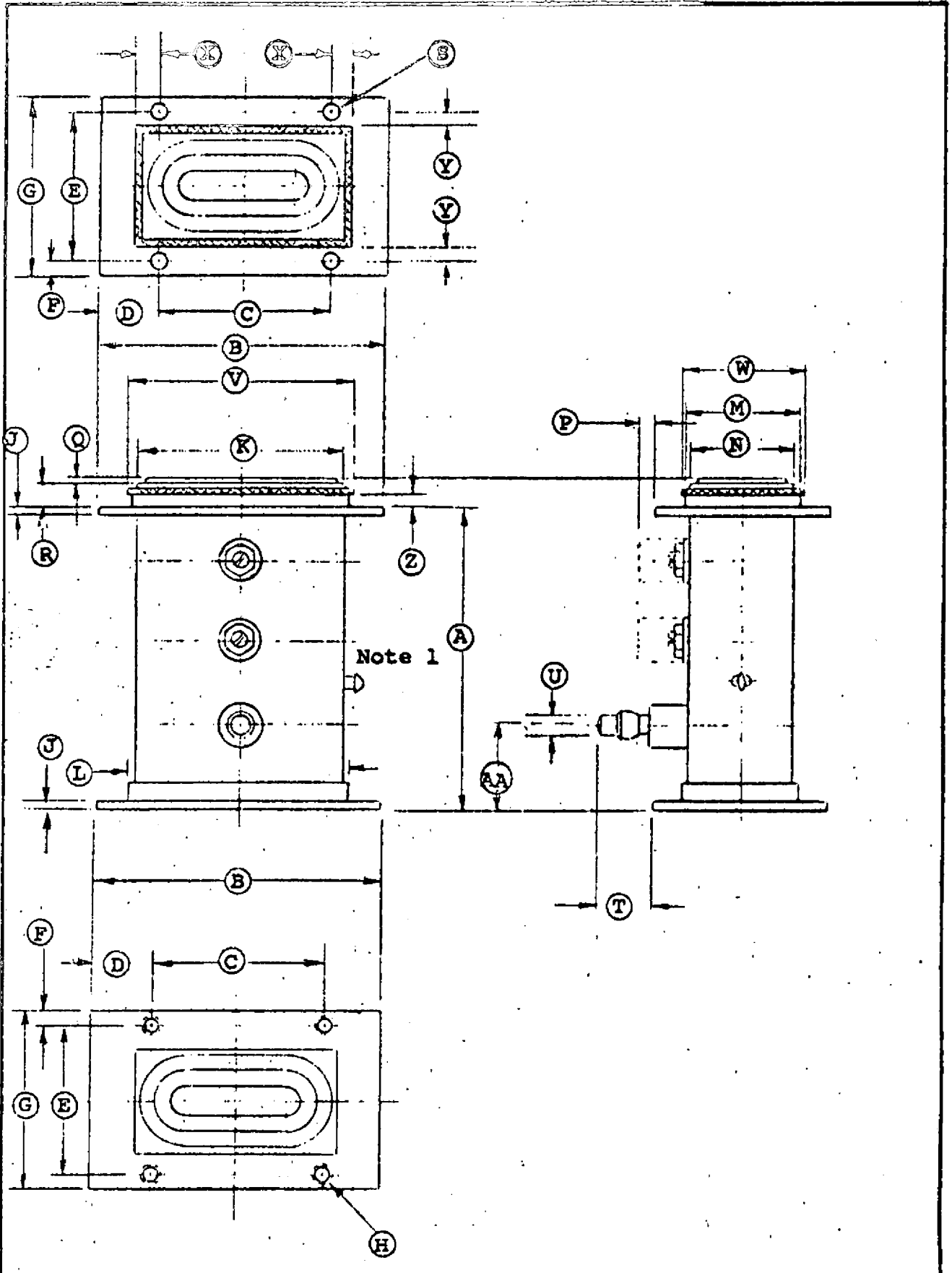
Operational Band VSWR 1.4 max.	2625 to 2925 Mc
1.2 Max.	2700 to 2900 Mc
Ignitor Ignition Time	5 sec.
Ignitor Voltage Drop at $I_i=100\mu\text{A dc}$	-200 to -400 volts
Spike Leakage Energy at 2800Mc, $p_o=50\text{kw}$	0.3 ergs
Flat Leakage Power at 2800Mc, $p_o=50\text{kw}$	25 mw
Insertion Loss at 2800Mc, $I_i=100\mu\text{A dc}$;	0.5 db
Recovery Time at 50 kw peak, 3 db down	15 usec
High Level VSWR 1.15 max.	2800 Mc

Mechanical Data - General

Dimensions	Outline dated 4-24-61
Mounting Position	Any
Weight, approximately	30 oz.

Absolute Maximum Ratings

Transmitter Peak Power	100 kw
Transmitter Average Power	100 w
Ignitor Current	100 to 200 $\mu\text{A dc}$
Ignitor Open Circuit Supply Voltage	-1000 Vdc min.
Altitude	10,000 ft. max.



Page 1 of 2	SPECIFICATION SHEET	METCOM, INC. 76 LAFAYETTE ST. SALEM, MASS.
	OUTLINE	4-24-61
8099		

Ref.	Dimension In Inches
A	4.375±.030
B	4.125±.016
C	2.500±.010
D	0.812±.016
E	2.250±.010
F	0.188±.016
G	2.625±.016
H	#10-32NF 4 Holes
J	0.125±.016
K	3.000±.008
L	3.212±.015
M	1.718±.015
N	1.500±.008
P	0.188 Max.
Q	0.070 Max.
R	0.330±.030
S	0.219 Dia. 4 Holes
T	0.812 Max.
U	0.250±.005
V	3.223 Max.
W	1.723 Max.
X	0.350±.016
Y	0.275±.016
Z	0.182±.010
AA	1.219±.016

Note 1: Tube input flange shall mate with tube mount as shown on drawing 153-JAN.

Note 2: Gasket per drawing 189-JAN shall be securely affixed to tube input end.

Note 3: Exhaust tube shall not extend beyond flange.

Page 2 of 2	SPECIFICATION SHEET	METCOM, INC. 76 LAFAYETTE ST. SALEM, MASS.
	OUTLINE	
	8099	4-24-61